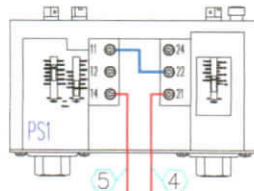


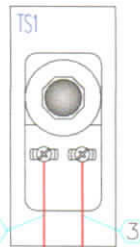
# rite-temp

Electrical Schematic for:  
208/230 VAC  
Models: DCS8-230 DCS10-230 DCS12-230

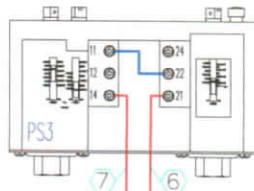
PS1: Copeland  
Pressure Switch  
#085-CP2M-7A



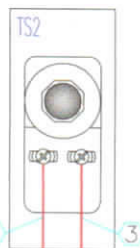
TS1: White-Rogers  
Thermostat Switch  
1609-105



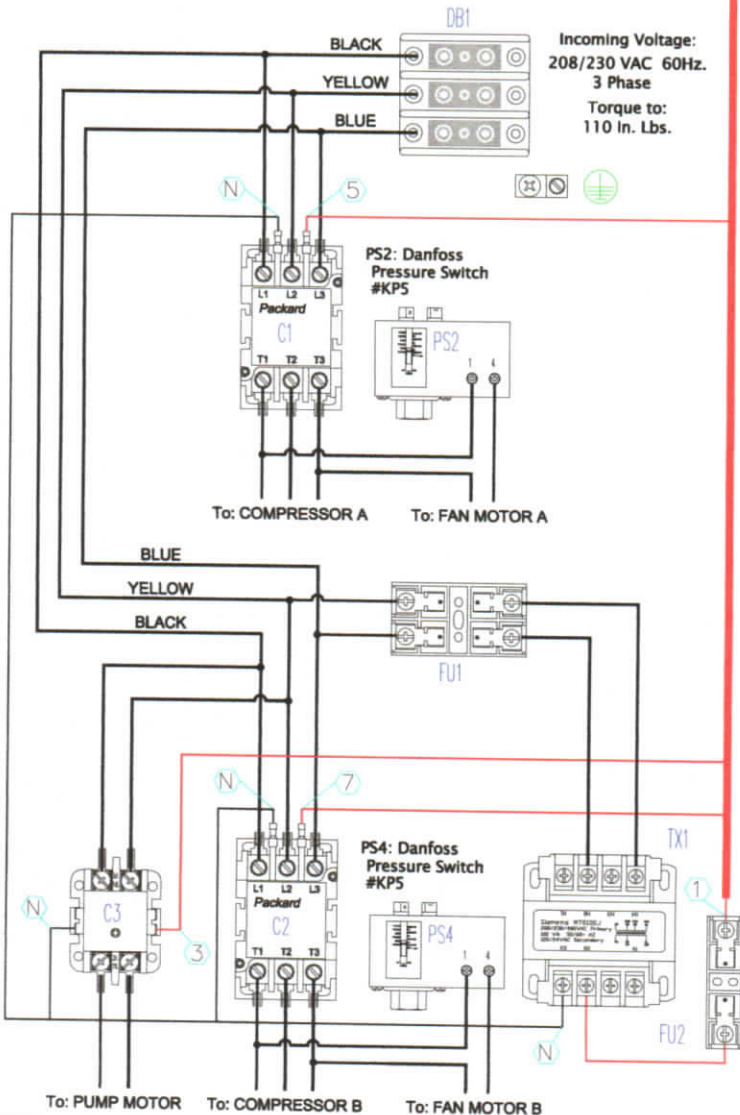
PS3: Copeland  
Pressure Switch  
#085-CP2M-7A



TS2: White-Rogers  
Thermostat Switch  
1609-105

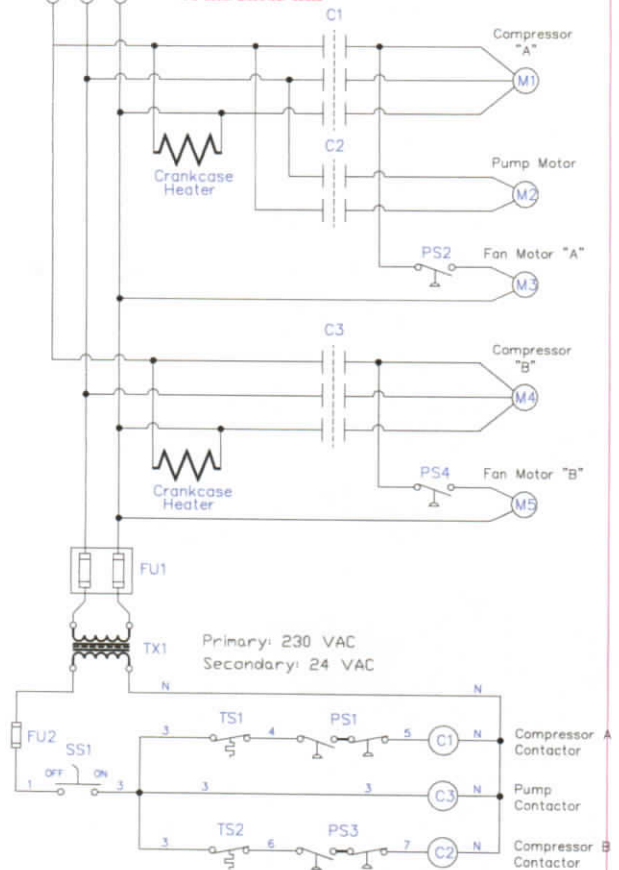


Incoming Voltage:  
208/230 VAC 60Hz.  
3 Phase  
Torque to:  
110 In. Lbs.



Incoming Voltage:  
208/230 VAC  
60Hz. 3 Phase  
L1 L2 L3

**! Warning !**  
CUSTOMER MUST PROVIDE  
A Power Disconnect with  
A Short Circuit Current Rating  
in Compliance with National  
And Local Electrical Codes



## LEGEND

Denotes wire Number

Red & White control  
wiring is 24 VAC.

All Red & White control 230VAC wire is  
wire is #16 Awg. #14 Awg. Black, Yellow, Blue

### FUSE VALUES

FU1 2ea. 2 Amp FU2 1ea. 5 Amp

### COMPONENTS

|                   |                                     |                  |  |
|-------------------|-------------------------------------|------------------|--|
| DB1<br>Littelfuse | Distribution Block<br>LFS25723      | C1/C2<br>Packard | Contactors<br>C340A                            |
| FU1<br>Littelfuse | Fuse Holder (2 Pole)<br>L60030M-25Q | C3<br>Eaton      | Contactors<br>C258NB230T                       |
| FU2<br>Littelfuse | Fuse Holder (1 Pole)<br>L60030-15Q  | BS1<br>Bussmann  | Barrier Strip<br>TB200-4                       |
| TX1<br>Siemens    | Transformer<br>MT0100J              | SS1<br>Siemens   | Selector Switch<br>35B3500-2PA11<br>35B3400-08 |