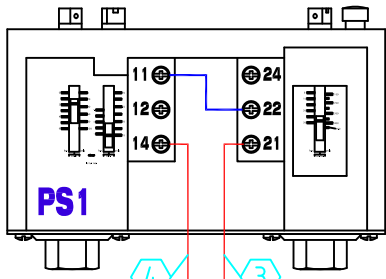


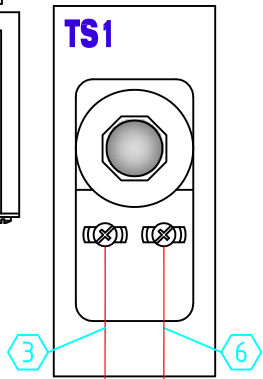
# rite-temp water chillers

Electrical Schematic for:  
208/230 VAC Models  
RTS-803/1003, RTH-803/1003, RTR-803/1003\*  
& 1203 & 1203 & 1203

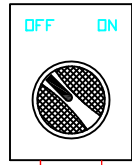
PS1: Copeland  
Pressure Switch  
#085-CP2M-7A



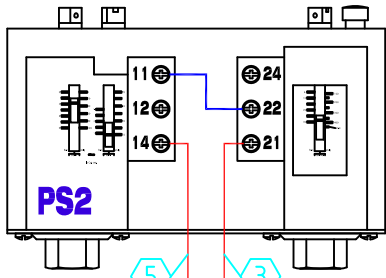
TS1: White-Rogers  
Thermostat Switch  
1609-105



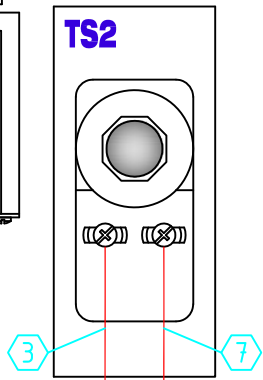
SS1



PS2: Copeland  
Pressure Switch  
#085-CP2M-7A



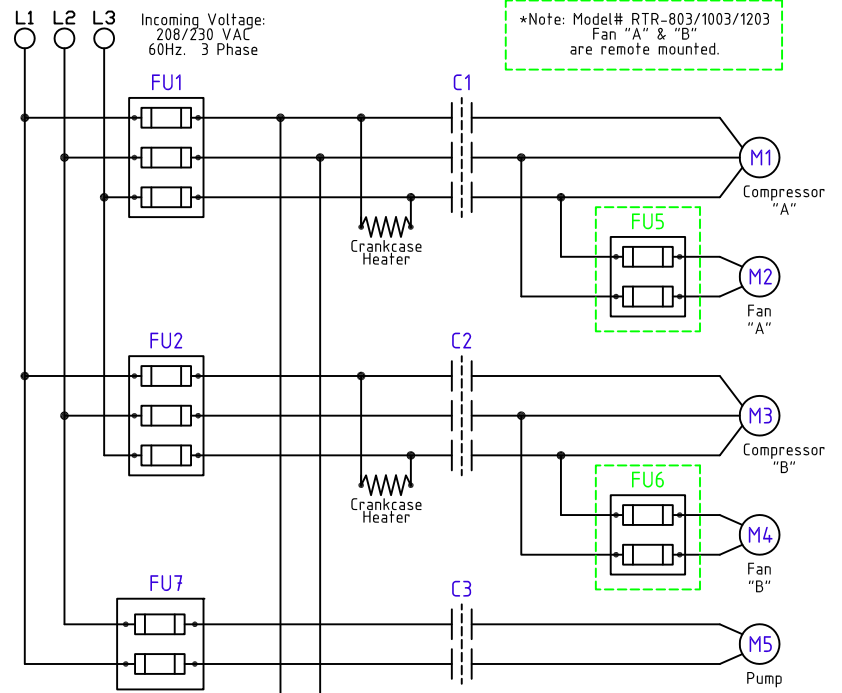
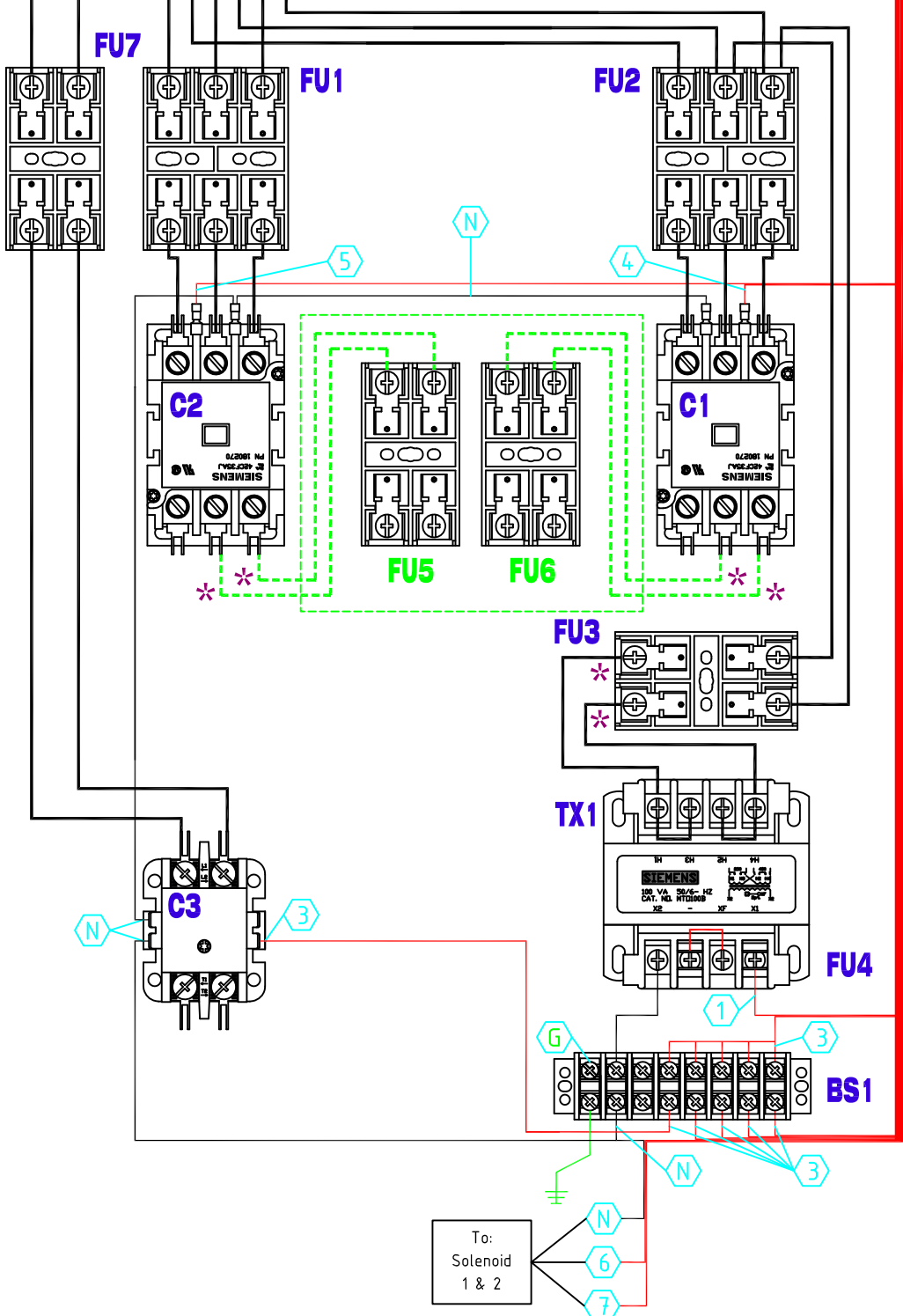
TS2: White-Rogers  
Thermostat Switch  
1609-105



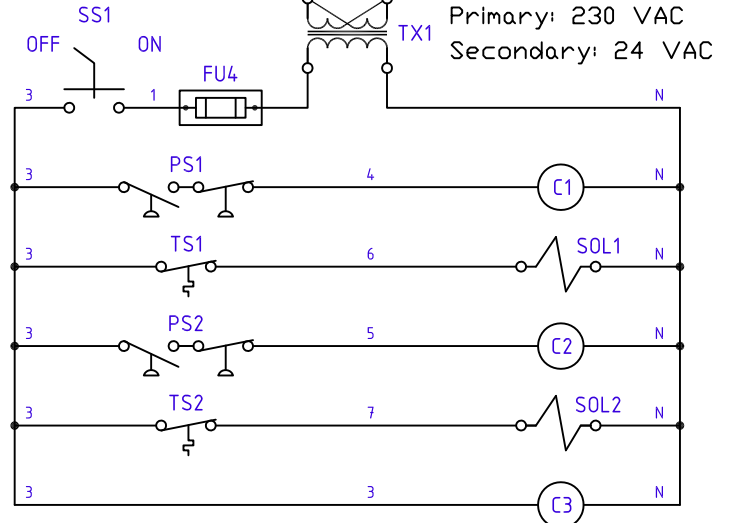
DB1



Incoming Voltage:  
208/230 VAC 60Hz.  
3 Phase  
Torque to:  
110 In. Lbs.



\*Note: Model# RTR-803/1003/1203  
Fan "A" & "B"  
are remote mounted.



## LEGEND

Denotes remote fan option  
on Model# RTR only

Denotes wire Number

Red & White control  
wiring is 24 VAC.

All Red & White control  
wire is #16 Awg.

\* Is #14 Awg. Black  
All other is #10 Awg.

### FUSE VALUES

FU1	3ea. 30 Amp	FU4	1ea. 5 Amp
FU2	3ea. 30 Amp	FU5	2ea. 10 Amp
FU3	2ea. 2 Amp	FU6	2ea. 10 Amp
FU7	2ea. 10 Amp		

### COMPONENTS

DB1	Distribution Block Bussmann 16321-3	C1/C2	Contactors Siemens 42CF35AJ
FU1/2	Fuse Holder (3 Pole) Bussmann BM6033SQ	C3	Contactors Siemens 45EG20AJB
FU3/7	Fuse Holder (2 Pole) Furnas 42CF35AJBLE	BS1	Barrier Strip Bussmann TB200-8
TX1	Transformer Siemens MT0 100 J	SS1	Selector Switch Siemens 3SB3500-2PA11 3SB3400-0B